

# CASE STUDY

## Water Environment Services: A Modernized Expansion Sets the Tone for Future Retrofits

MELTRIC Electrical Connections Enable Clackamas County Enhanced Safety and Efficiency for a Reliably Clean Environment and Water Quality



### MAXIMIZED EFFICIENCY



### UNCOMPROMISED SAFETY



### DEPENDABLE OPERATION

#### INTRODUCTION:

In Clackamas County, southeast of Portland, Oregon, Water Environment Services (WES) plays a crucial role in maintaining water quality and protecting public health for a population of 194,000. With operations that span seven cities and a large swath of the unincorporated urban community, WES manages the operation of five water resource recovery facilities, 23 pumping stations, and nearly 360 miles of pipes. Each year, they treat an impressive seven billion gallons of wastewater, ensuring that the community's natural environment and economy continue to thrive.

#### THE CHALLENGE:

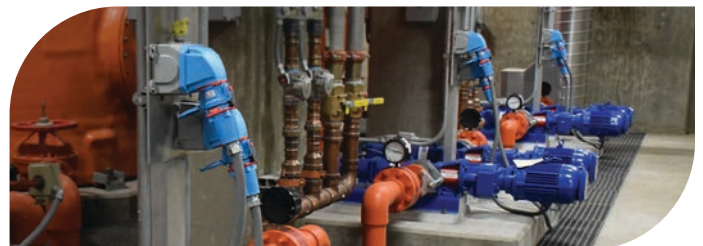
In the fall of 2019, WES embarked on a major facility expansion to meet growing community needs. With the expansion came the critical need to investigate ways to minimize downtime while maintaining – and even enhancing – safety standards. The challenge was to find a

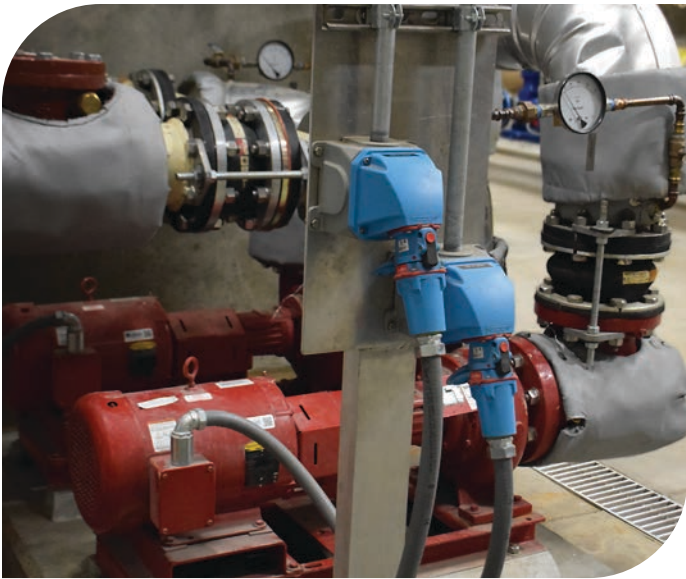
solution that would allow WES to maintain 24/7 operation. WES required electrical connections that would reliably maintain their mission of “protecting public health and supporting the vitality of the community, natural environment, and economy.”

#### SOLUTION: MELTRIC® DEPENDABILITY

During the expansion project, WES explored solutions and discovered MELTRIC Switch-Rated plugs and receptacles. MELTRIC quickly became their ideal choice, meeting the needs of WES for safety, durability, and efficiency. The plugs offered a solution that allowed the maintenance staff the functional ease of swapping equipment, without requiring the need of a third party or the electrical manager to be present.

By implementing MELTRIC connectors, WES was able to create a safer and more efficient environment for its electrical systems, reducing downtime during maintenance and allowing for quick disconnects without the need for extensive safety gear or additional personnel.





- **Enhanced Safety** – MELTRIC’s watertightness, dead-front construction, and arc-flash protection features minimized the risk of electrical accidents, ensuring a safer working environment for the facility’s team.
- **Increased Efficiency** – With fewer disruptions and safer equipment handling, WES was able to operate with greater efficiency, enabling maintenance teams to perform their work faster and more reliably.

These benefits were so impactful that WES developed plans to retrofit all pre-existing facilities with MELTRIC connectors, with positive foresight of future upgrades and improvements.

WES’s decision to implement MELTRIC Switch-Rated plugs and receptacles has proven to ensure continuous, safe, and efficient operation of their water treatment facilities. As WES continues its retrofitting process, MELTRIC remains a key partner in enabling a clean, resilient water future for Clackamas County.

## RESULTS/BENEFITS:

The integration of MELTRIC connectors into WES’s expansion project resulted in significant improvements:

- **Reduced Downtime** – MELTRIC’s prewire functionality with plug-and-play design allowed WES to quickly swap out equipment without requiring specialized electrical staff to always be present.

## EXAMPLES OF MELTRIC IN USE:

MELTRIC products are used across WES’s facilities for essential applications such as:

- Pumps
- Boilers
- Exhaust Fans
- Motors
- HVAC Systems

These installations have helped WES streamline its operations, allowing for maintenance without the need to bring in third-party electricians or additional maintenance staff.



For wastewater facilities looking to enhance safety, efficiency, and reliability, MELTRIC’s innovative electrical connectors are a proven solution.



Contact MELTRIC today for a **free trial** and see how our products can transform your operations.

**meltric.com**

4765 W. Oakwood Park Drive • Franklin, WI 53132  
414-433-2700 • mail@meltric.com

©2024 MELTRIC Corporation. All rights reserved. CS TRICITYWW

**MELTRIC**  
A COMPANY OF MARECHAL ELECTRIC