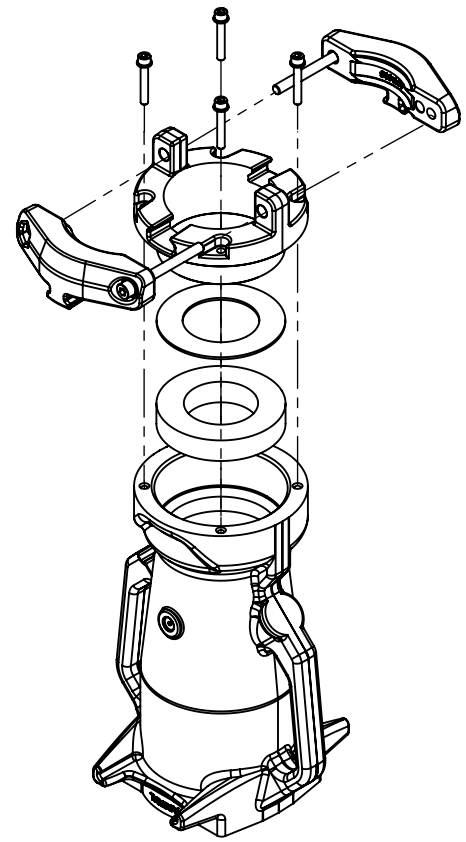
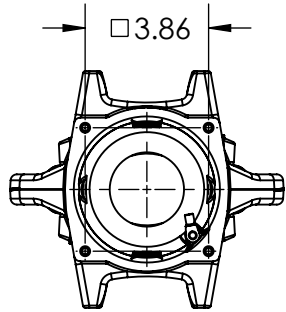
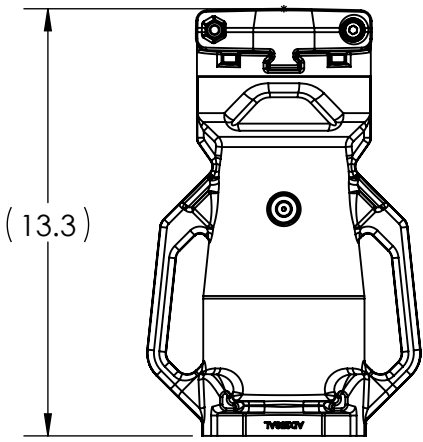
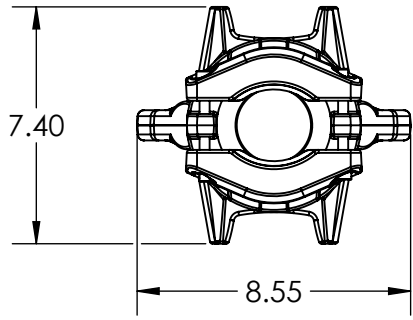
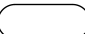



This drawing is the property of MELTRIC Corporation, Franklin (Milwaukee), Wisconsin, USA. Any unauthorized copying of this drawing by any means, ENG/RD/06 REV: 21 ISSUED DATE: 10/7/16 or disclosure of its contents to any person not authorized by MELTRIC Corporation or its agents to receive it, is strictly prohibited.



| PART NUMBER | CABLE RANGE |
|-------------|-------------------------------|
| 5K6POD50 | 1.575" TO 1.969" (40 TO 50mm) |
| 5K6POD60 | 2.008" TO 2.362" (51 TO 60mm) |
| 5K6POD70 | 2.402" TO 2.756" (61 TO 70mm) |
| 5K6POD80 | 2.795" TO 3.150" (71 TO 80mm) |

| | |
|--|--|
| TOLERANCES UNLESS OTHERWISE SPECIFIED | |
| MACHINED SURFACES $\sqrt[125]{\text{MAX}}$ | ENGLISH 0.X ±0.05 0.XX ±0.01 0.XXX ±0.005 |
| GROUND SURFACES $\sqrt[32]{\text{MAX}}$ | |
| ANGLE TOLERANCE ±1° | |
| REMOVE BURRS & SHARP EDGES TO .015 MAX. | |
|  DIMENSIONS SHOWN IN OVALS ARE INSPECTION DIMENSIONS. | |

| | | | |
|---|-------------|--|----------|
|  A COMPANY OF MARÉCHAL ELECTRIC | | DRAWING TITLE: | |
| | | SIZE 6 & 7 HANDLE W/INTEGRATED CORD GRIP | |
| DATE: | SCALE | MATERIAL: | |
| | NTS | ALUMINUM, PAINTED BLACK | |
| SHEET: | PART NUMBER | | REVISION |
| 1 OF 1 | 5K6PODxx | | |