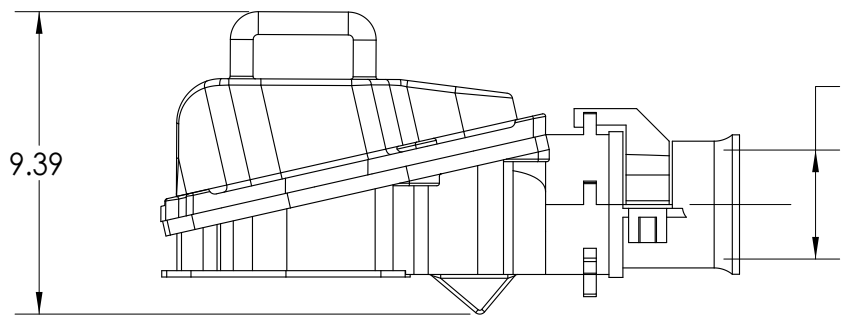
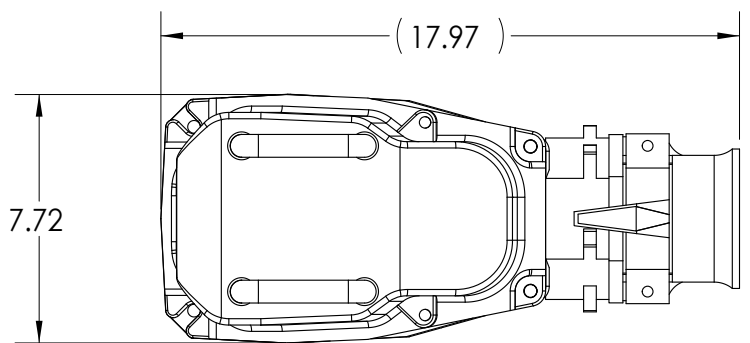
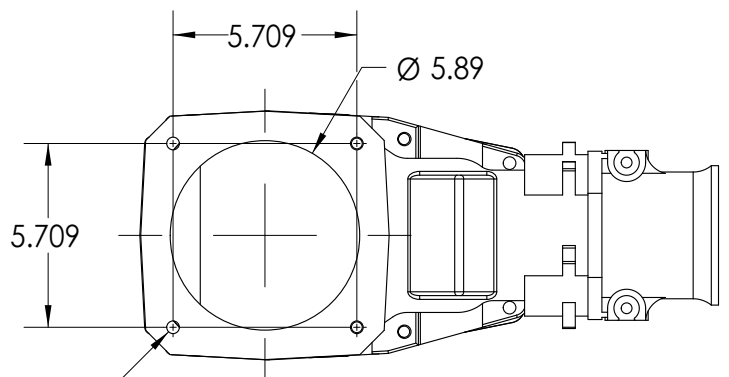
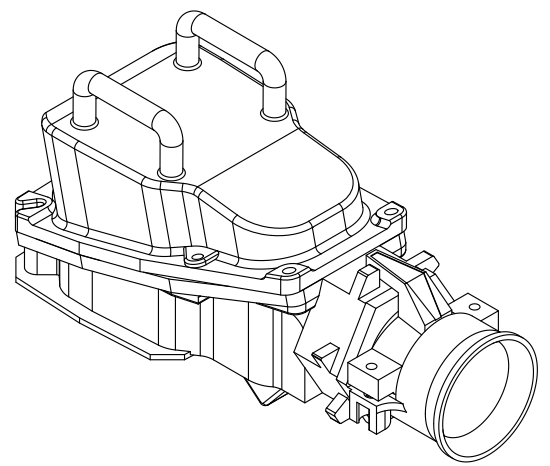


This drawing is the property of MELTRIC Corporation, Franklin (Milwaukee), Wisconsin, USA. Any unauthorized copying of this drawing by any means, or disclosure of its contents to any person not authorized by MELTRIC Corporation or its agents to receive it, is strictly prohibited.



[86mm]
 Ø 3.39in
 MAXIMUM CABLE
 BUNDLE DIA.



4 PLCS
M10X1.5

APPROX WEIGHT = 12 LBS.

PART NUMBER	CABLE RANGE
47-3A913-200	2.000" - 2.125"
47-3A913-225	2.125" - 2.250"
47-3A913-237	2.250" - 2.375"
47-3A913-250	2.375" - 2.500"
47-3A913-275	2.500" - 2.750"
47-3A913-300	2.750" - 3.000"
47-3A913-312	3.000" - 3.125"
47-3A913-335	3.125" - 3.350"
47-3A913-350	3.350" - 3.390"

TOLERANCES UNLESS OTHERWISE SPECIFIED		MELTRIC A COMPANY OF MARECHAL ELECTRIC	
MACHINED SURFACES $\sqrt[125]{\text{MAX}}$ GROUND SURFACES $\sqrt[32]{\text{MAX}}$ ANGLE TOLERANCE $\pm 1^\circ$ REMOVE BURRS & SHARP EDGES TO .015 MAX.	ENGLISH 0.X ±0.05 0.XX ±0.01 0.XXX ±0.005	DRAWN	APPROVED
DIMENSIONS SHOWN IN OVALS ARE INSPECTION DIMENSIONS.		DRAWING TITLE: PFQ300 METAL 90° ANGLED HANDLE	
		DATE:	SCALE: NTS
		MATERIAL: METAL	
		SHEET: 1 OF 1	PART NUMBER: 47-3A913-xxx REVISION: