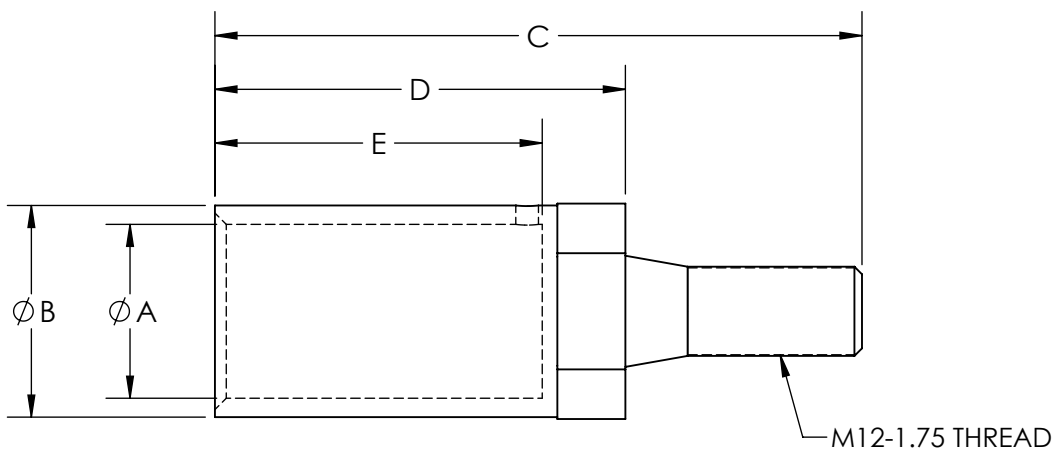
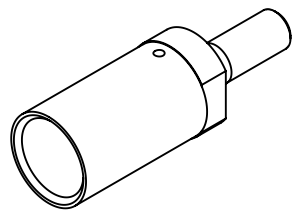


This drawing is the property of MELTRIC Corporation, Franklin (Milwaukee) Wisconsin, USA. Any unauthorized copying of this drawing by any means, ENG/RD/06 REV: 21 ISSUED DATE: 10/7/16 or disclosure of its contents to any person not authorized by MELTRIC Corporation or its agents to receive it, is strictly prohibited.



**\*CLASS H & I**

PART NUMBER	DIMENSION (INCHES)						FLEXIBLE WIRING*		COARSE WIRING	
	Ø A	Ø B	C	D	E	F	mm <sup>2</sup>	AWG	mm <sup>2</sup>	AWG
45-4A50D	.43	.58	2.46	1.59	.77	.82	50	1/0	70	2/0
45-4A70D	.52	.67	2.23	1.62	.95	.82	70	2/0	95	3/0
45-4A95D	.57	.75	1.95	1.36	1.06	.82	95	3/0	120	4/0
45-4A12D	.64	.83	2.90	1.90	1.22	.95	120	250	150	300
45-4A15D	.71	.91	2.19	1.59	1.30	.82	150	300	185	400
45-4A18D	.81	1.02	2.86	1.99	1.50	.95	185	350	240	450
45-4A24D	.91	1.10	3.00	2.14	1.69	.95	240	450	300	500
45-4A30D	1.03	1.26	3.40	2.53	1.75	.95	300	600	400	750
45-4A40D	1.15	1.56	3.76	2.70	2.10	.95	400	750,777	500	800



**FOR CS1000 DEVICES: USE WITH HANDLE FOR CORD MOUNTING.**

TOLERANCES UNLESS OTHERWISE SPECIFIED

MACHINED SURFACES  $\sqrt{125} \text{ MAX}$

GROUND SURFACES  $\sqrt{32} \text{ MAX}$

ANGLE TOLERANCE  $\pm 1^\circ$

REMOVE BURRS & SHARP EDGES TO .015 MAX.

DIMENSIONS SHOWN IN OVALS ARE INSPECTION DIMENSIONS.

**ENGLISH**

0.X  $\pm 0.05$

0.XX  $\pm 0.01$

0.XXX  $\pm 0.005$

**MELTRIC**  
A COMPANY OF MARÉCHAL ÉLECTRIC

DRAWN	APPROVED	DRAWING TITLE:	
DATE:		SCALE	MATERIAL:
SHEET:		NTS	METAL
1 OF 1		PART NUMBER	REVISION

SP AND CS1000 STRAIGHT THREADED CRIMPING LUG

45-4AxxD