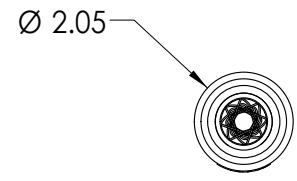
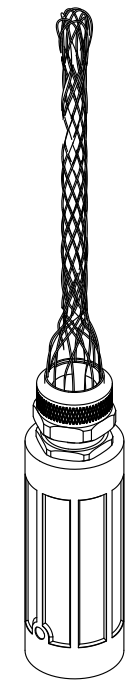
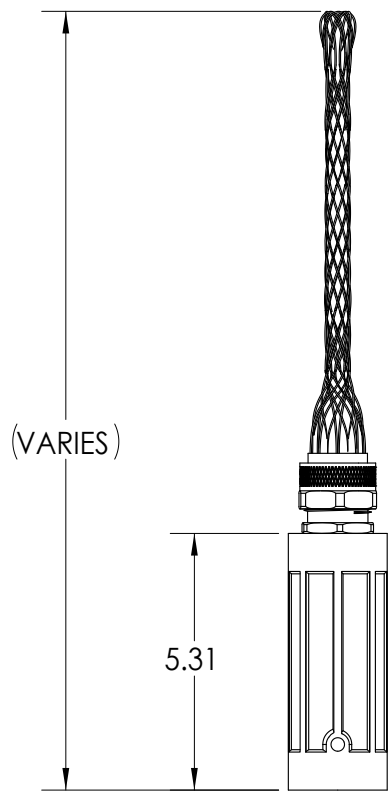


This drawing is the property of MELTRIC Corporation, Franklin (Milwaukee), Wisconsin, USA. Any unauthorized copying of this drawing by any means, or disclosure of its contents to any person not authorized by MELTRIC Corporation or its agents to receive it, is strictly prohibited.



PART NUMBER	CABLE OUTSIDE DIA.
45-3A783-A	.875-1.000"
45-3A783-B	1.000-1.125"
45-3A783-C	1.125-1.250"
45-3A783-D	1.250-1.375"

TOLERANCES UNLESS OTHERWISE SPECIFIED		MELTRIC A COMPANY OF MARECHAL ELECTRIC	
MACHINED SURFACES $\sqrt[125]{\text{MAX}}$ GROUND SURFACES $\sqrt[32]{\text{MAX}}$ ANGLE TOLERANCE $\pm 1^\circ$ REMOVE BURRS & SHARP EDGES TO .015 MAX.	ENGLISH 0.X ±0.05 0.XX ±0.01 0.XXX ±0.005	DRAWN: _____ DATE: _____	APPROVED: _____ SCALE: NTS MATERIAL: _____
DIMENSIONS SHOWN IN OVALS ARE INSPECTION DIMENSIONS.		SHEET: 1 OF 1	DRAWING TITLE: CS1000 HEAVY DUTY HANDLE W/CORD GRIP PART NUMBER: 45-3A783-x REVISION: _____