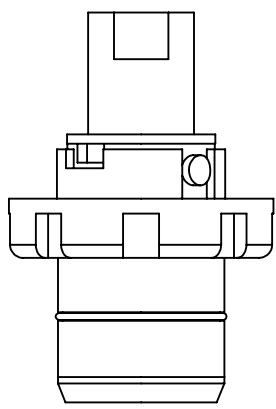
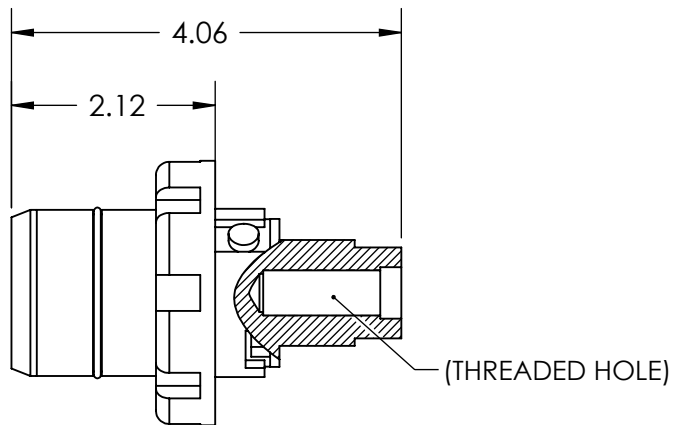
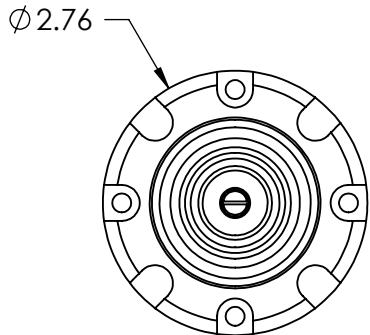
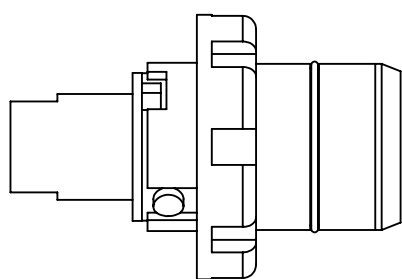
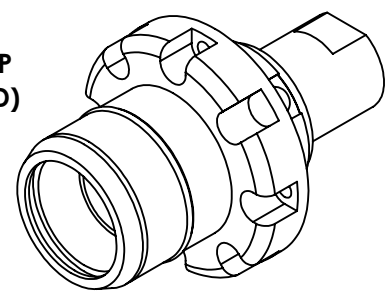


This drawing is the property of MELTRIC Corporation, Franklin (Milwaukee) Wisconsin, USA. Any unauthorized copying of this drawing by any means, ENG/RD/06 REV: 21 ISSUED DATE: 10/7/16 or disclosure of its contents to any person not authorized by MELTRIC Corporation or its agents to receive it, is strictly prohibited.

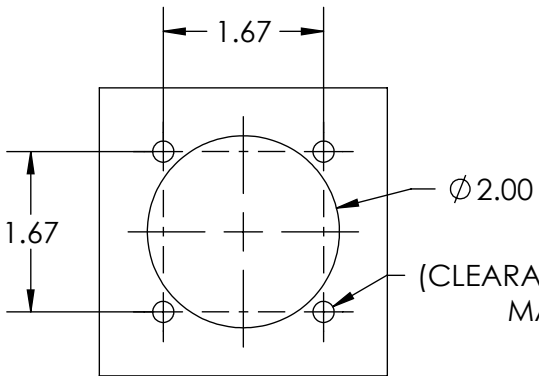
G F E D C B A



(TETHERED RUBBER INLET CAP INCLUDED BUT NOT DEPICTED)



(THREADED HOLE)





$\phi 2.00$
 4X $\phi .22$
 (CLEARANCE HOLE FOR M5-0.8
 MACHINE SCREW)

ENTRY HOLE PATTERN

PART NUMBER	POLARITY
44-48001-P80*	L1
44-48002-P80*	L2
44-48003-P80*	L3
44-4800N-P80*	NEUTRAL
44-4800T-P80	GROUND
44-4800P	POSITIVE
44-4800M	NEGATIVE

***FOR >250V, USE SUFFIX -P88**

TOLERANCES UNLESS OTHERWISE SPECIFIED	
MACHINED SURFACES $\sqrt[125]{\text{MAX}}$	ENGLISH 0.X ± 0.05 0.XX ± 0.01 0.XXX ± 0.005
GROUND SURFACES $\sqrt[32]{\text{MAX}}$	
ANGLE TOLERANCE $\pm 1^\circ$	
REMOVE BURRS & SHARP EDGES TO .015 MAX.	
 DIMENSIONS SHOWN IN OVALS ARE INSPECTION DIMENSIONS.	

 A COMPANY OF MARECHAL ELECTRIC			
DRAWN	APPROVED	DRAWING TITLE:	
DATE:	SCALE	SP-600A INLET W/OUT LUG	
SHEET:	MATERIAL:	BLACK POLY CASING	
1 OF 1	PART NUMBER	44-4800x-P80	REVISION