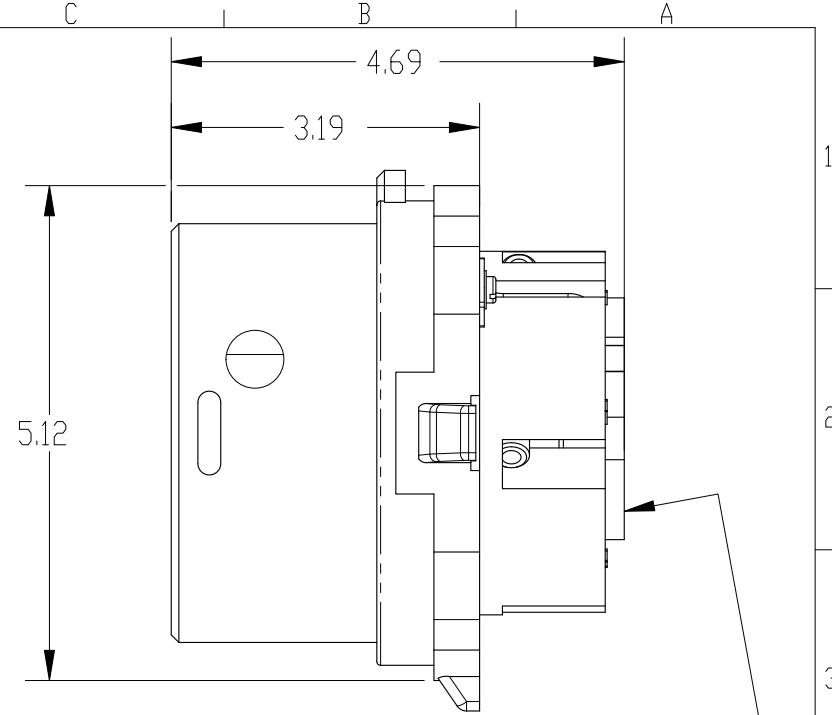
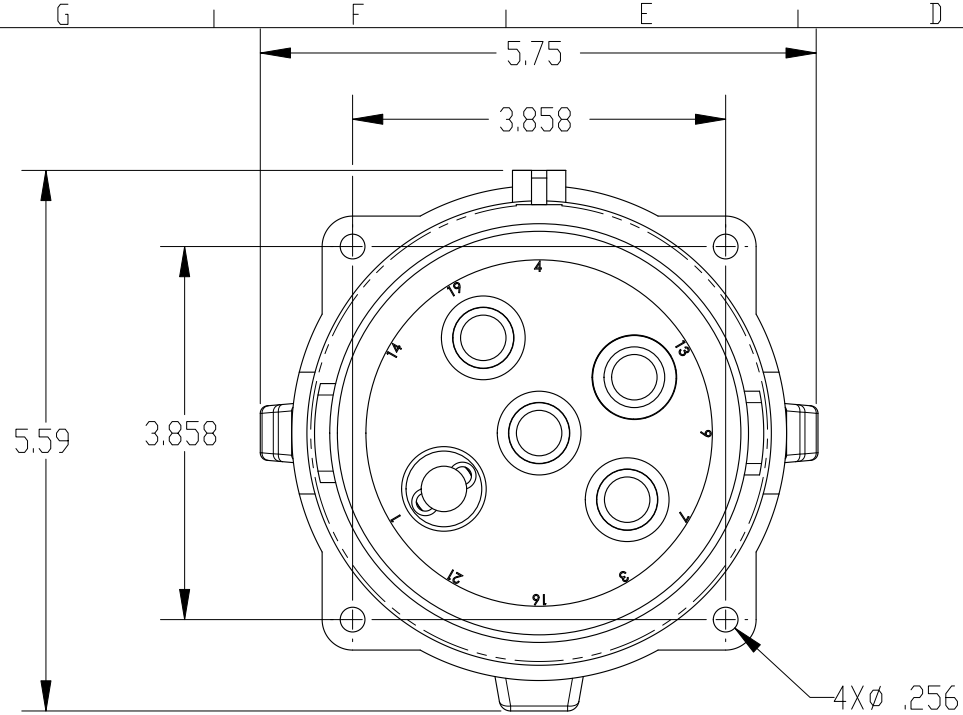
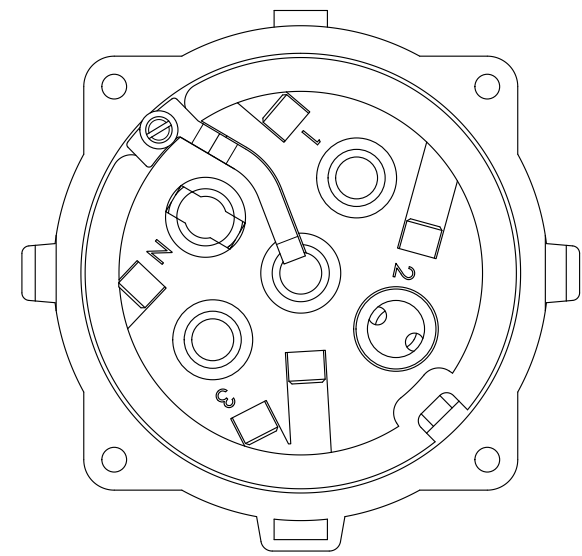
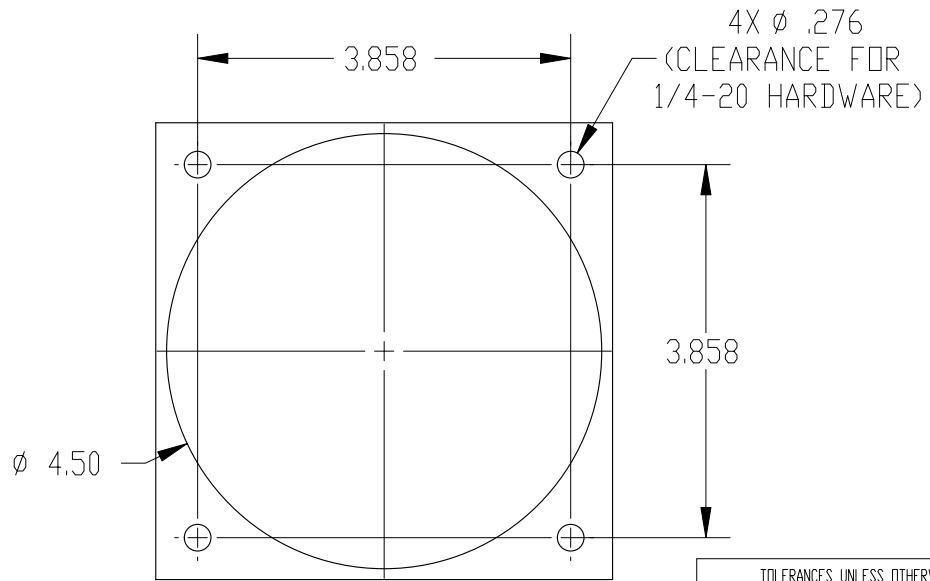


This drawing is the property of MELTRIC Corporation, Franklin (Milwaukee), Wisconsin, USA. Any unauthorized copying of this drawing by any means, or disclosure of its contents to any person not authorized by MELTRIC Corporation or its agents to receive it, is strictly prohibited.



600VDC DEVICES WILL HAVE JUMPERS & EXTRA CONTACTS.



ENTRY HOLE PATTERN

| | |
|---|--------------------------|
| TOLERANCES UNLESS OTHERWISE SPECIFIED | |
| MACHINED SURFACES | $\sqrt[125]{\text{MAX}}$ |
| GROUND SURFACES | $\sqrt[32]{\text{MAX}}$ |
| ANGLE TOLERANCE | $\pm 1^\circ$ |
| REMOVE BURRS & SHARP EDGES TO .015 MAX. | |
| DIMENSIONS SHOWN IN OVALS ARE INSPECTION DIMENSIONS. | |
| ENGLISH $0.X \pm 0.05$ $0.XX \pm 0.01$ $0.XXX \pm 0.005$ | |

| | | | |
|------------------------------------|----------------|-------------------------------------|--|
| A COMPANY OF MARÉCHAL ELECTRIC | | DRAWING TITLE: | |
| DRAWN | APPROVED | DSDC2 INLET, ALL VOLTAGES/AMPERAGES | |
| DATE: | SCALE | MATERIAL: | |
| | NTS | METAL CASING | |
| SHEET: | PART NUMBER | REVISION | |
| 1 OF 1 | 37-28xxx(-xxx) | | |