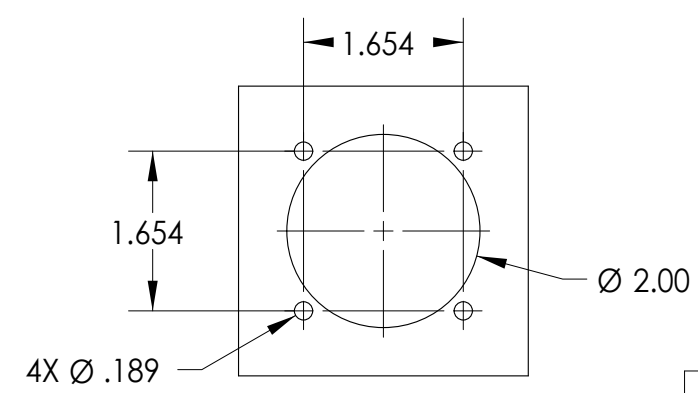
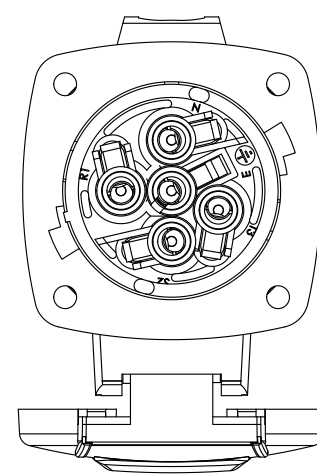
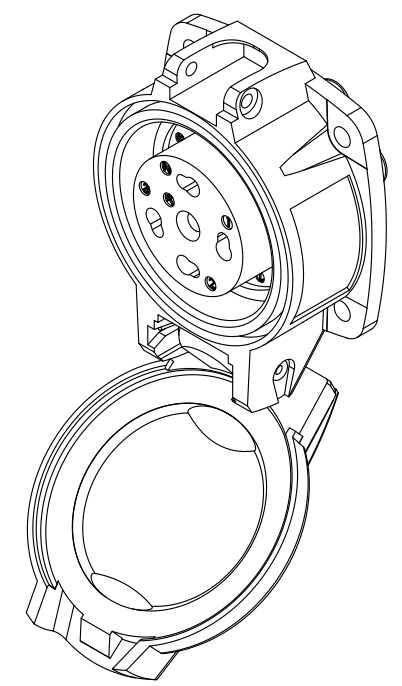
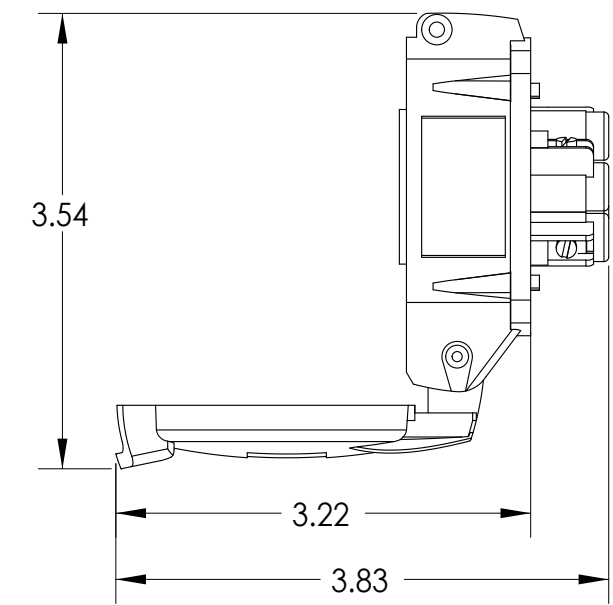
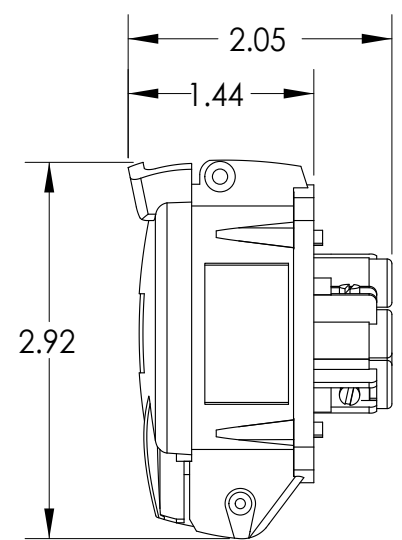
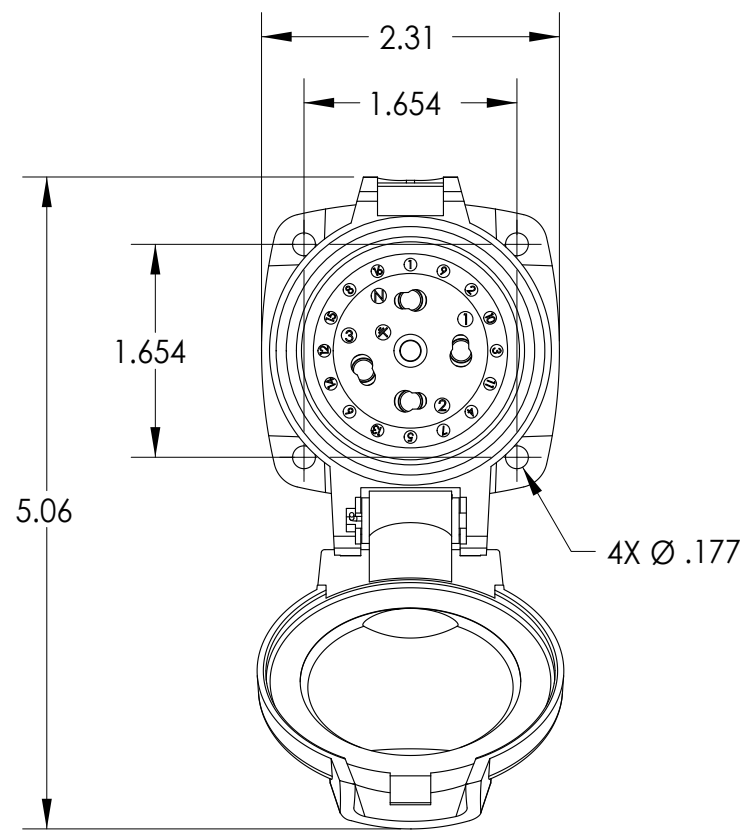


This drawing is the property of MELTRIC Corporation, Franklin (Milwaukee), Wisconsin, USA. Any unauthorized copying of this drawing by any means, or disclosure of its contents to any person not authorized by MELTRIC Corporation or its agents to receive it, is strictly prohibited.



ENTRY HOLE PATTERN

TOLERANCES UNLESS OTHERWISE SPECIFIED		 A COMPANY OF MARECHAL ELECTRIC	
MACHINED SURFACES $\sqrt[125]{\text{MAX}}$	ENGLISH		
GROUND SURFACES $\sqrt[32]{\text{MAX}}$	0.X ±0.05	DRAWN	APPROVED
ANGLE TOLERANCE ±1°	0.XX ±0.01	DRAWING TITLE:	
REMOVE BURRS & SHARP EDGES TO .015 MAX.	0.XXX ±0.005	DATE:	PN20 RECEPT., 20AMP, IP55
DIMENSIONS SHOWN IN OVALS ARE INSPECTION DIMENSIONS.		SCALE	MATERIAL:
		1 OF 1	NTS
		SHEET:	PART NUMBER
			01-S4xxx
			REVISION