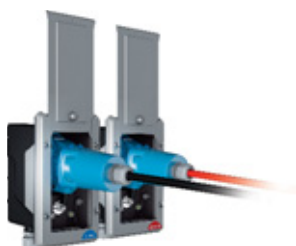


MOBILE APPLICATIONS

20 A

RETTBOX® ONE
WITH OR WITHOUT AIR



20 A/32 A

RETTBOX® S
WITH OR WITHOUT AIR



20 A » 150 A

SELF-EJECTION DECONTACTOR™



MODEL	CURRENT	U MAX AC	MAX NB OF CONTACTS	NB AUX./PIL. MAX
RETTBOX® ONE	20 A	440 V	4+E	3 AUX.
RETTBOX® S	20 A/32 A	440 V	4+E	2 AUX.
SELF-EJECTION DECONTACTOR™		«« Depending on reference »»		
PN ANTI ENGINE START UP	30 A	250 V	2+E	2 AUX.
DISTRIBUTION BOXES	20 A » 90 A	400 V	4+E	4 AUX.

DOWNLOAD ALL TECHNICAL SHEETS ON OUR WEBSITE **MARECHAL.COM**

SAFE POWER SUPPLY FOR AUXILIARY CHARGING DEVICES

30 A

PN ANTI ENGINE START UP PLUG



20 A » 90 A

DISTRIBUTION BOXES



MOBILE
APPLICATIONS

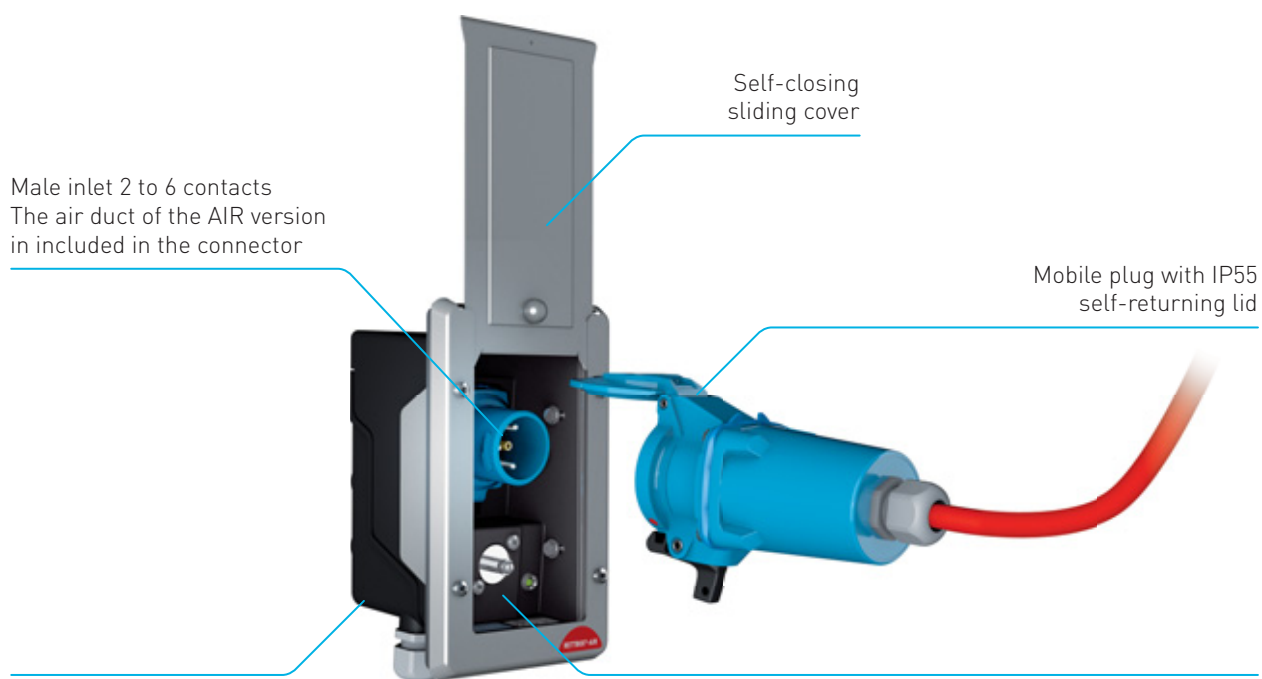
DECONTACTOR™	MATIÈRE	IP	COMPRESSED AIR SUPPLY OPTION	PAGE
Yes	POLY METAL	IP55	AIR Version	180
Yes	POLY	IP54	AIR Version	190
Yes	«« Depending on reference »»		No	192
/	POLY METAL	IP55	No	196
Yes	POLY METAL	IP66	No	198

20 A/32 A

RETTBOX® ONE SERIES

ELECTROMAGNETIC SELF-EJECTION

RETTBOX® ONE



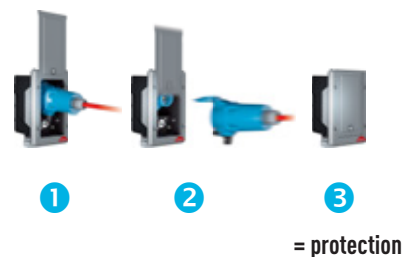
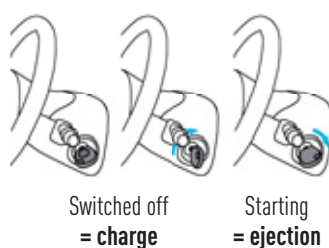
RETTBOX® ONE 20 A: casing in GRP
RETTBOX® ONE 32 A: stainless steel AISI316L

Electric solenoid 12/24 V
providing automatic ejection when the engine is started

INFOS +

ENSURE SPEED AND SAFETY

- 1 Loading box connected to the electrical system of the vehicle.
- 2 Automatic ejection of the coupler socket upon start-up of the vehicle by way of an electric solenoid.
- 3 Protection against water and dust by means of a self-closing cover.

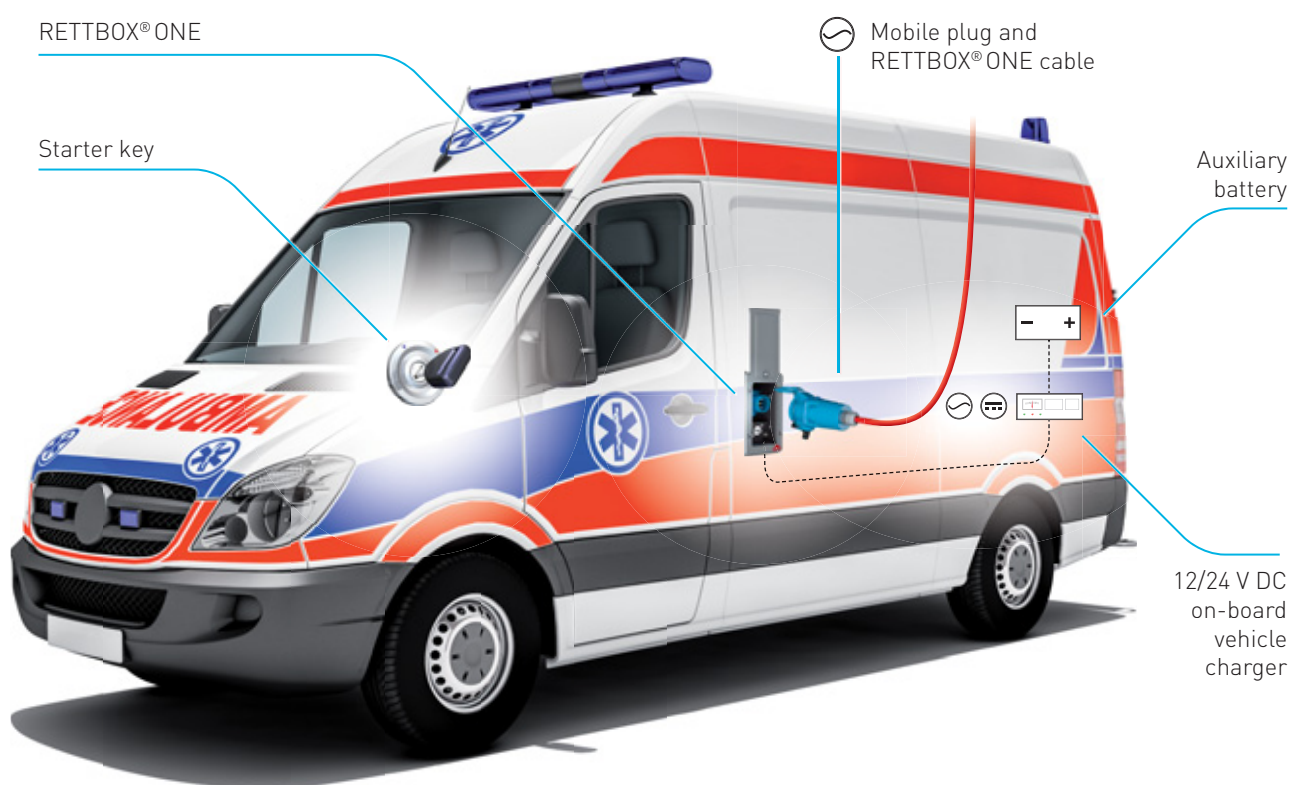


RETTBOX® ONE complies with the following standards:

- European Low Voltage Directive and RoHS, European REACH Regulation.
- IEC/EN 60309-1 and IEC/EN 60670.

CONNECTION DIAGRAM BY TYPE

Power supply with 230 V AC or 400 V AC on-board battery charger.



FIND ALL THE INFORMATION ABOUT THE
RETTBOX® ONE ON OUR YOUTUBE CHANNEL



20A

440 V
U MAXI

RETTBOX® ONE

ELECTROMAGNETIC SELF-EJECTION



IP55



1,5 - 6 mm² ⁽¹⁾



GRP
STAINLESS
STEEL



IK08
IK10



- 40 °C
+ 60 °C



3 AUX.

[1] Flexible wiring (min.-max.)



ENCLOSURE WITH INLET
pre-wired, cable 4 m
supplied with 4 m cable ⁽²⁾



COUPLER SOCKET
pre-wired, cable 4 m
included ⁽²⁾

RETTBOX® ONE (20A)

220 - 250 V AC	1P+N+E	With 12 V relay and male inlet	6116015RK412U	6113015RK4L
220 - 250 V AC	1P+N+E	With 24 V relay and male inlet	6116015RK424U	6113015RK4L
220 - 250 V AC	1P+N+E+2 aux.	With 12 V relay and male inlet	6116175RK412U	6113175RK4L
220 - 250 V AC	1P+N+E+2 aux.	With 24 V relay and male inlet	6116175RK424U	6113175RK4L
24 V DC	2P DC*	With 24 V relay and male inlet	6116089RK424U	6113089RK4L
12 V DC	2P DC*	With 12 V relay and male inlet	6116059RK412U	6113059RK4L

*LED not available for these configurations.

[2] All versions are available in 4, 8 and 12 m, contact us for the references.

OTHER FEATURES

	RETTBOX® ONE (20 A)
Front	stainless steel
Box	GRP
Front dimensions (W x H) in mm	114 X 184
Cut-out dimensions on vehicle's frame (W x H x D) in mm	83 X 163 x 94
Auxiliary contacts in option	2 Aux
Weight (excluding coupler socket)	1 200 g
Built-in DECONTACTOR™	20 A

DOWNLOAD THE RETTBOX® ONE USER MANUAL
FROM OUR WEBSITE MARECHAL.COM



INFOS +

LED CONTROL LIGHT

RETTBOX® ONE (20 A, 230 V) feature a LED signal light that indicates the presence of charging voltage.



OPTIONS

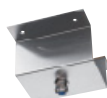
Reference

LEATHER PULL-GRIP (COUPLER SOCKET)



611AZIE

CEILING BRACKET MADE OF STAINLESS STEEL

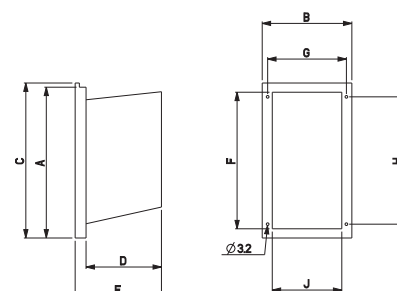


RETTBOX® ONE 20 A

611AHUTRRR L

DRAWINGS
AND DIMENSIONS

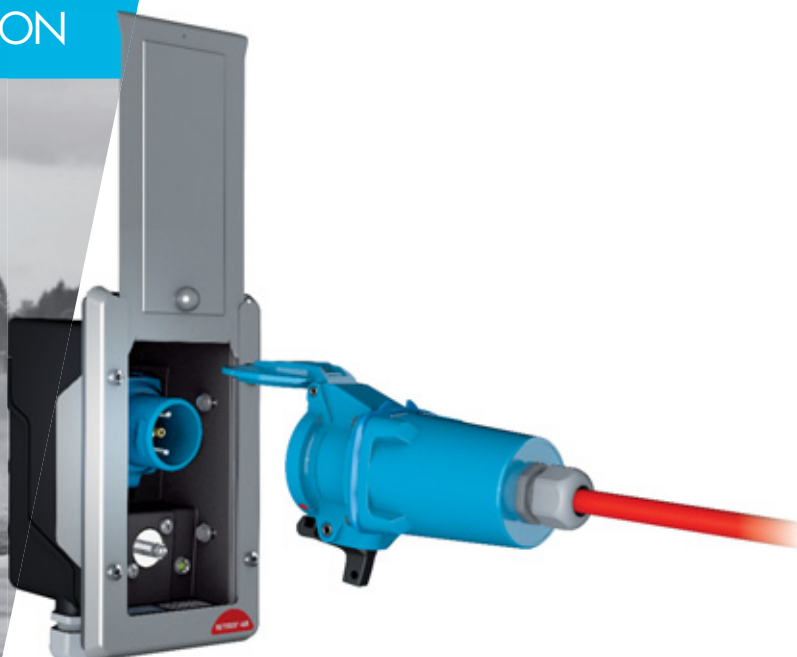
	A	B	C	D	E	F	G	H	J
RETTBOX® ONE 20 A	184	114	184	89	114	163	94	152	83



20A/32A

440 V
U_{MAX}

RETTBOX® ONE AIR ELECTROMAGNETIC SELF-EJECTION



IP55



1,5 - 6 mm² ⁽¹⁾



GRP
STAINLESS
STEEL



IK08
IK10



- 40 °C
+ 60 °C



3 AUX.

(1) Flexible wiring (min.-max.)



RETTBOX® ONE AIR (20 A)

ENCLOSURE WITH INLET supplied with 4 m cable - compressed air conduct up to 13 bars⁽²⁾
COUPLER SOCKET pre-wired, cable 4 m included ⁽²⁾

220 - 250 V AC	1P+N+E	With 12 V relay and male inlet	6116015AK412U	6113015AK4L
220 - 250 V AC	1P+N+E	With 24 V relay and male inlet	6116015AK424U	6113015AK4L
220 - 250 V AC	1P+N+E+1 aux.	With 12 V relay and male inlet	6116215AK412U	6113215AK4L
220 - 250 V AC	1P+N+E+1 aux.	With 24 V relay and male inlet	6116215AK424U	6113215AK4L
24 V DC	2P DC*	With 24 V relay and male inlet	6116089AK424U	6113089AK4L
12 V DC	2P DC*	With 12 V relay and male inlet	6116059AK412U	6113059AK4L
Cable only (per metre): 611AKOM				

*LED not available for these configurations.

(2) All versions are available in 4, 8 and 12 m, contact us for the references.



RETTBOX® ONE AIR (32 A)

ENCLOSURE WITH INLET supplied with 4 m cable - compressed air conduct up to 13 bars⁽²⁾
COUPLER SOCKET pre-wired, cable 4 m included ⁽²⁾

200 - 250 V AC	1P+N+E+3 aux.	With 24 V relay and male inlet	3816187AK424U	3813187AK4L
380 - 440 V AC	3P+N+E+1 aux.	With 24 V relay and male inlet	3816247AK424U	3813247AK4L
Cable only (per metre): 381AKOM				

(2) All versions are available in 4, 8 and 12 m, contact us for the references.

OTHER FEATURES

	RETTBOX® ONE AIR (20 A)	RETTBOX® ONE AIR (32 A)
Front	stainless steel	stainless steel
Box	GRP	stainless steel
Front dimensions (W x H) in mm	114 X 184	132 X 188
Cut-out dimensions on vehicle's frame (W x H x D) in mm	83 X 163 x 94	103 X 173 x 145
Auxiliary contacts in option	1 Aux	3 Aux
Weight (excluding coupler socket)	1 200 G	3 200 G
Built-in DECONTACTOR™	20 A	32 A
Compressed air duct	up to 13 bars	up to 13 bars

**DOWNLOAD THE RETTBOX® USER MANUAL
FROM OUR WEBSITE
MARECHAL.COM**



INFOS +

LED CONTROL LIGHT

RETTBOX® ONE AIR (20 A, 230 V) feature a LED signal light that indicates the voltage presence.



OPTIONS

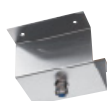
Reference

LEATHER PULL-GRIP (COUPLER SOCKET)



611AZIE

CEILING BRACKET MADE OF STAINLESS STEEL



RETTBOX® ONE AIR 20 A

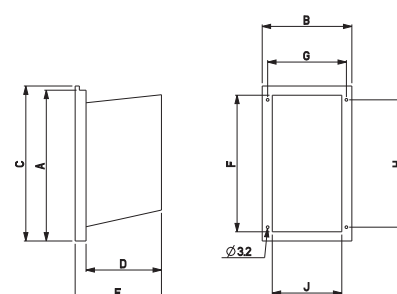
611AHUTAAA L

RETTBOX® ONE AIR 32 A

381AHUTAAA L

DRAWINGS AND DIMENSIONS

	A	B	C	D	E	F	G	H	J
RETTBOX® ONE AIR 20 A	184	114	184	89	114	163	94	152	83
RETTBOX® ONE AIR 32 A	188	132	197	140	151	173	116	169	103



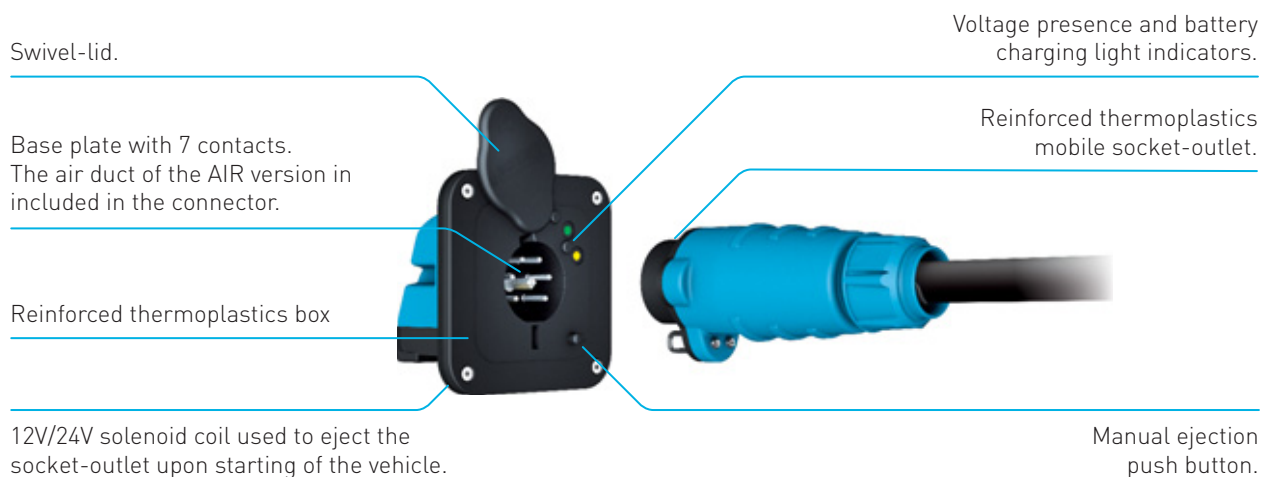
20 A/32 A

RETTBOX® S SERIES

ELECTROMAGNETIC SELF-EJECTION

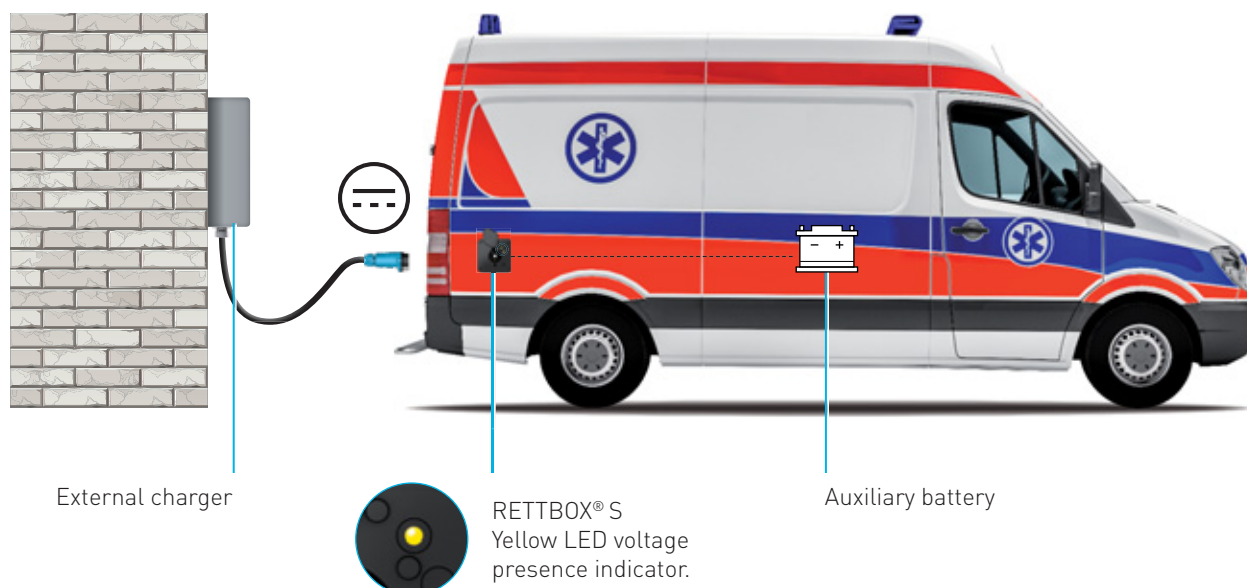
WITH OR WITHOUT AIR

RETTBOX® S



VOLTAGE PRESENCE AND AUXILIARY BATTERY CHARGING LIGHT INDICATORS

Figure 1: with an external battery charger.
12 V DC or 24 V DC power supply.



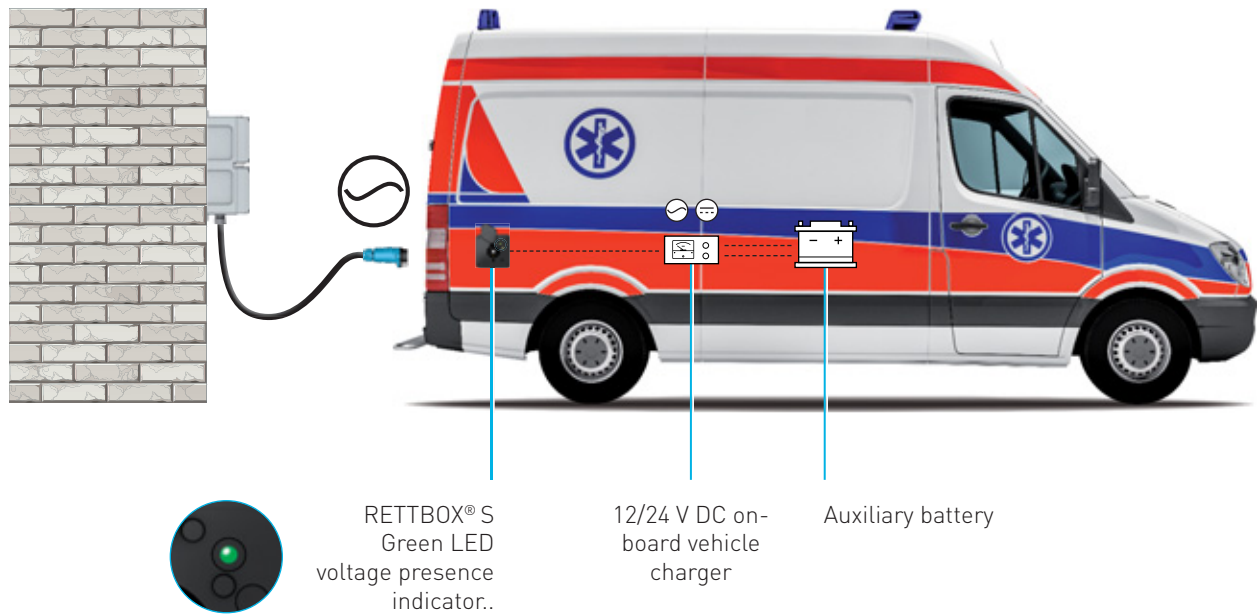
RETTBOX® S is a professional use compact and load-breaking self-ejecting socket-outlet.

The best in class industrial socket-outlet providing power to all equipment on-board a vehicle.

RETTBOX® S complies with the following standards:

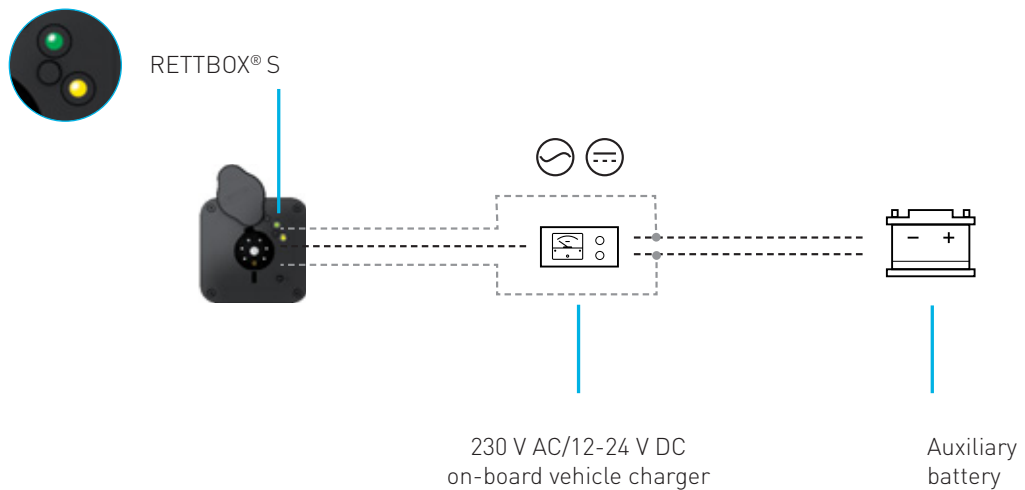
- European Low Voltage Directive and RoHS, European REACH Regulation.
- IEC/EN 61984, IEC/EN 60947-3.

Figure 2: with an on-board vehicle charger.
up to 480 V AC power supply.



OPTIONAL

Order a 12 V DC/24 V DC yellow LED battery charging indicator. Reference : 151ALED-24J



20A/32A

480 V
U MAXI

RETTBOX® S

ELECTROMAGNETIC SELF-EJECTION

NEW

WITH OR WITHOUT AIR



IP54



1,5 - 6 mm² (1)



GRP



IK08



- 40 °C
+ 60 °C

(1) Flexible wiring (min.-max.)



Cable is not included

RETTBOX® S (20 A)
RETTBOX® S AIR (20 A)*



BOX *



COUPLER SOCKET
straight (2)*



angled 60° (3)

220 - 250 V AC	6P+E	With solenoid coil 12/24 V DC and male connector	1516016	1513016	15C3016
24 V DC	6P+E	With solenoid coil 12/24 V DC and male connector	1516046	1513046	15C3046
12 V DC	6P+E	With solenoid coil 12/24 V DC and male connector	1516026	1513026	15C3026

(2) Input/Cable outer Ø 5-21 mm - (3) Input/Cable outer Ø 9-18 mm, no Air version available.

* For AIR version, change the 0 of the product reference by A.



BOX *



COUPLER SOCKET
straight (2)*



angled 60° (3)

380 - 480 V AC	6P+E	With solenoid coil 12/24 V DC and male connector	1536036	1533036	15C3036
----------------	------	--	---------	---------	---------

(2) Input/Cable outer Ø 5-21 mm - (3) Input/Cable outer Ø 9-18 mm, no Air version available.

* For AIR version, change the 0 of the product reference by A.

OTHER FEATURES

	RETTBOX [®] S (20 A)	RETTBOX [®] S (32 A)	RETTBOX [®] S AIR (20 A)	RETTBOX [®] S AIR (32 A)
Box material	GRP	GRP	GRP	GRP
Front dimensions (W x H) in mm	120 x 120	120 x 120	120 x 120	120 x 120
IP Box	IP54	IP54	IP54	IP54
IP : mobile socket-outlet without plug cap	IP2X	IP2X	IP2X	IP2X
IP : mobile socket-outlet with plug cap	IP44	IP44	IP44	IP44
Cut-out dimensions on vehicle's frame (W x H x D) in mm	86 x 82 x 83	86 x 82 x 83	86 x 82 x 83	86 x 82 x 83
Weight (excluding coupler socket)	400 g	400 g	407 g	407 g
AIR Version	/	/	up to 13 bars	up to 13 bars

OPTIONS



Order a 12/24 V yellow LED battery charging indicator.
Reference : 151ALED-24J.



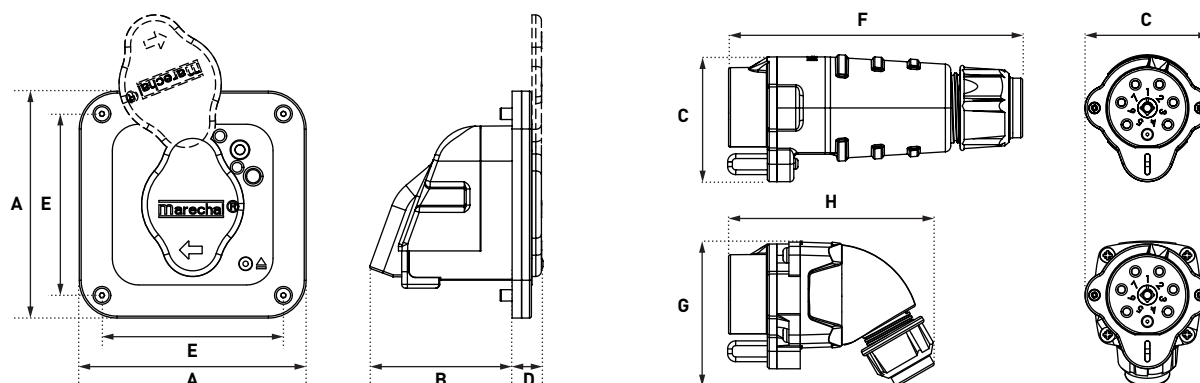
Contact us for wall installation
with a box 120x120x91.

Cable available per meter

381AKOM : 32 A cable, 1 air duct
+ 5G6mm² (4P+T) + 2 x 2.5mm² for auxiliaries

611AKOM: 20 A cable, 1 compressed air duct
+ 4G2.5mm² (3P+T) + 2 x 1.5mm² for auxiliaries

DRAWINGS AND DIMENSIONS



A	B	C	D	E	F	G	H
120	75	66	16	96	156	77	109

20 A » 150 A

DSN/DS/DXN RANGES MECHANICAL SELF-EJECTING

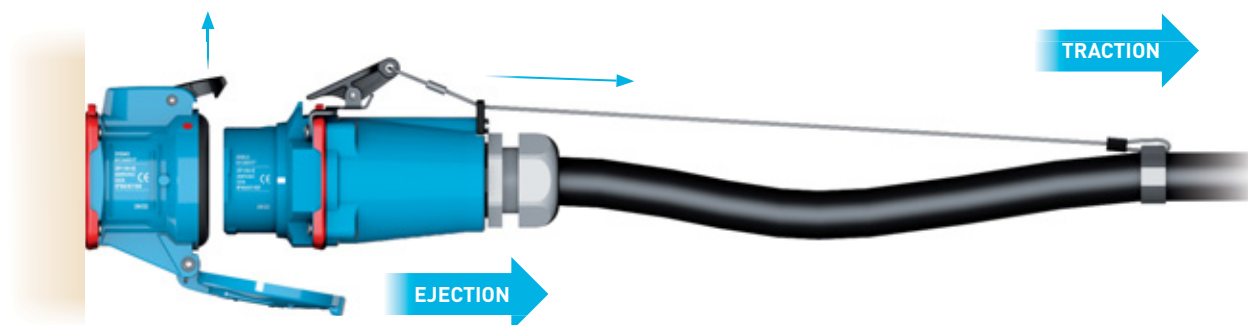
FIXED ELECTRIC POWER SUPPLY



Step 1: self-ejection system at rest.



Step 2: the traction acts on the electrical cable and the rope. The ejection lever gradually raises the latch.

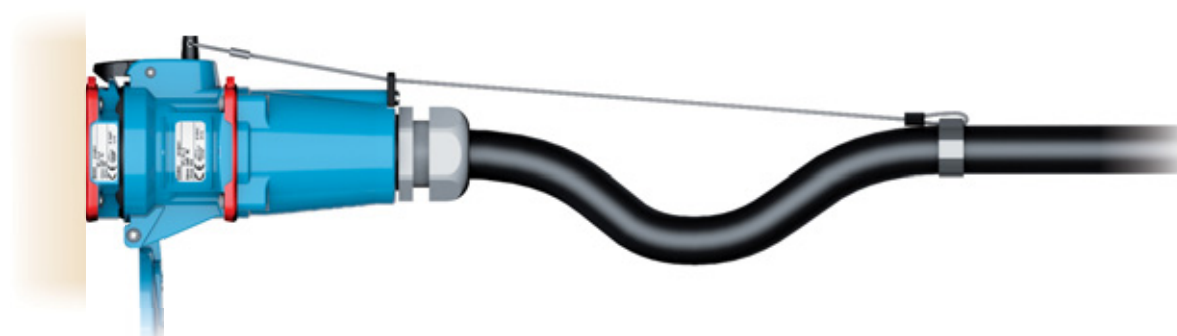


Step 3: the latch is fully raised by the ejection lever, causing the automatic ejection of the plug.

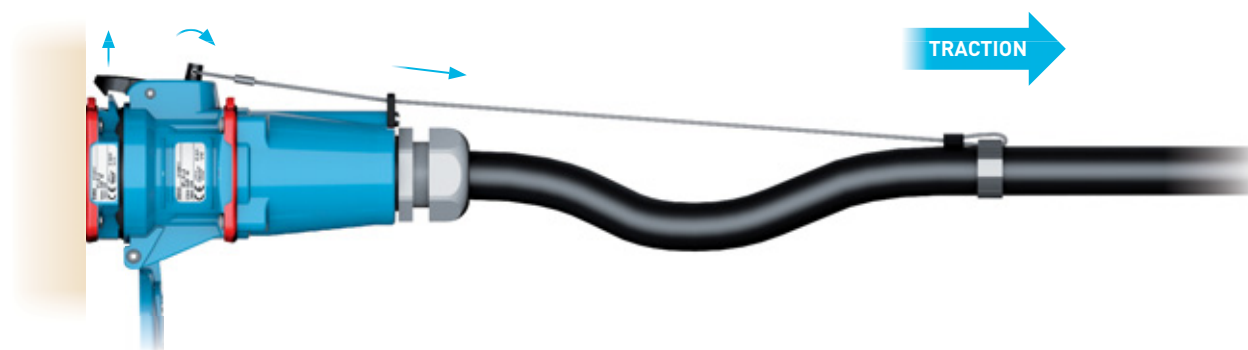
OPERATION SEQUENCE

Self-ejection systems avoid damage to the electrical installation when the mobile equipment is moved without removing the supply connection. They are designed to automatically release the mobile socket outlet or inlet thanks to a cord attached to the locking latch and the power supply cable.

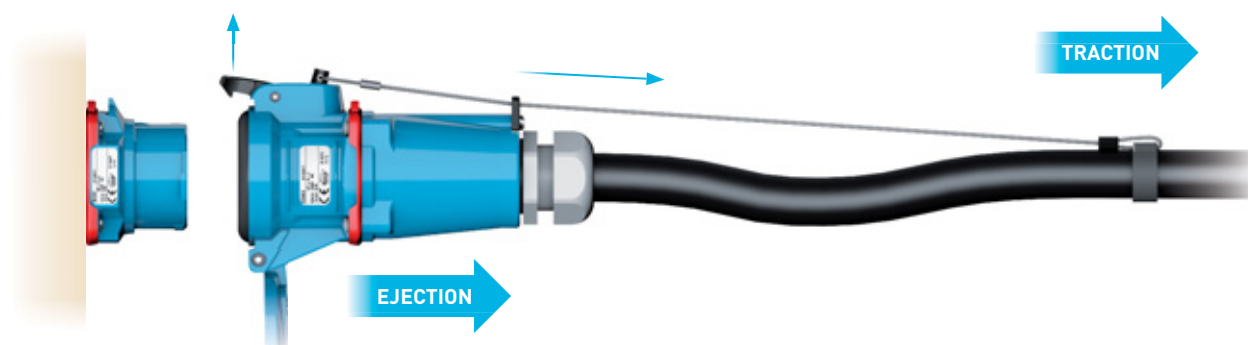
MOBILE POWER SUPPLY SOURCE



Step 1: Self-ejection system at rest.



Step 2: The traction acts on the electrical cable and the rope. The latch rises gradually.

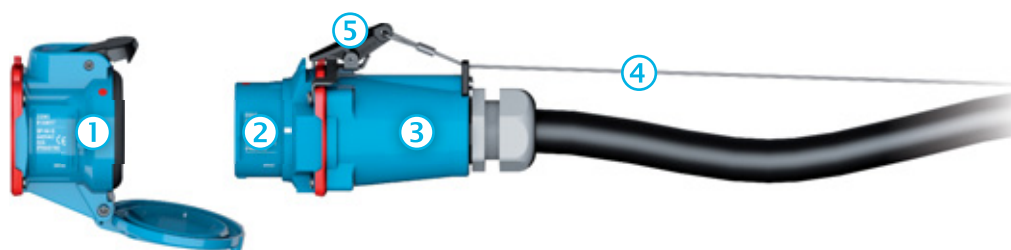


Step 3: The latch is fully raised, causing the automatic ejection of the socket.

MECHANICAL SELF-EJECTING DSN/DS1/DS3/DS6/DXN

FIXED ELECTRIC
POWER SUPPLY

EJECTING PLUG
(INLET + HANDLE)



EJECTION RELEASE LEVER



EJECTION RELEASE LEVER

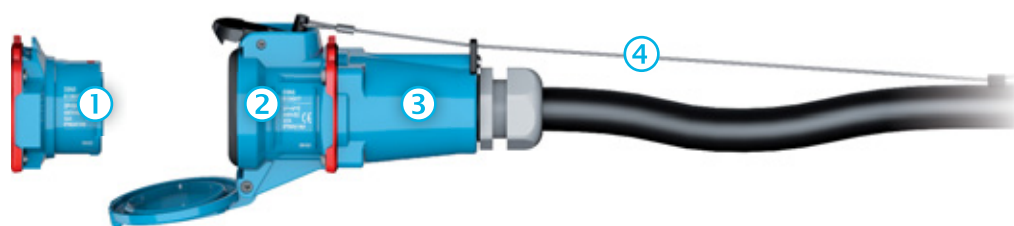
	INDUSTRIAL RANGE		ATEX RANGE
	DSN *	DS1/DS3/DS6* (contact us for metal version of DS9 and DS2)	DXN *
1 Socket-outlet	Ref. +352	Ref. +352	Ref. +352
2 Inlet	Standard	Standard	Standard
3 Poly handles + eyelet	Ref. +443	Ref. +443	See references in DXN accessories page.
4 Tension cord	311A336	311A336	251A336
5 Mechanism	611A338 (DSN1) 613A338 (DSN3) 616A338 (DSN6)	311A338 (DS1) 313A338 (DS3) 316A338 (DS6)	251A338 (DXN1) 253A338 (DXN3) 256A338 (DXN6)

* See the relevant product pages for the references of the plugs, socket-outlets and handles.



MOBILE POWER SUPPLY SOURCE

EJECTING COUPLER SOCKET (HANDLE + SOCKET- OUTLET)



	INDUSTRIAL RANGE		ATEX RANGE
	DSN *	DS1/DS3/DS6 * (contact us for metal version of DS9 and DS2)	DXN *
1 Inlet	Standard	Standard	Standard
2 socket outlet with ejection release lever	Ref. +354	Ref. +354	Ref. +354
3 Poly handles + eyelet	Ref. +443	Ref. +443	See references in DXN accessories page.
4 Tension cord	311A336	311A336	251A336

To fix the connector directly without a sleeve, please use a socket-outlet with a 180° opening option.

* See the relevant product pages for the references of the plugs, socket-outlets and handles.

30 A

230 V
U MAXI

ANTI ENGINE START UP PLUG PN



IP55



1-6 mm² (1)
1,5-10 mm² (2)



GRP
METAL



IK09
IK09



-40 °C
+60 °C

(1) Flexible wiring (min.-max.).
(2) Stranded wiring (min.-max.).



**GRP devices are not
compatible with metal
devices.**

**Standard self
closing/self
returning lid**

OTHER FEATURES

Reversed interior and contacts.

This PN features a special wiring configuration that prevents the vehicle from starting-up, if the plug is still connected. Safe operation is ensured and unintentional pull-out of the power supply system is avoided.



**VEHICLE INLET
PN**



SOCKET-OUTLET
on cable side
(cap is included)
PN



220-250 V AC

1P+N+E +2aux.

With latch
0124017825A

Without latch
0124017001A

0128017001A




220-250 V AC


1P+N+E +2aux.

0924017825A

0924017001A

0928017001A

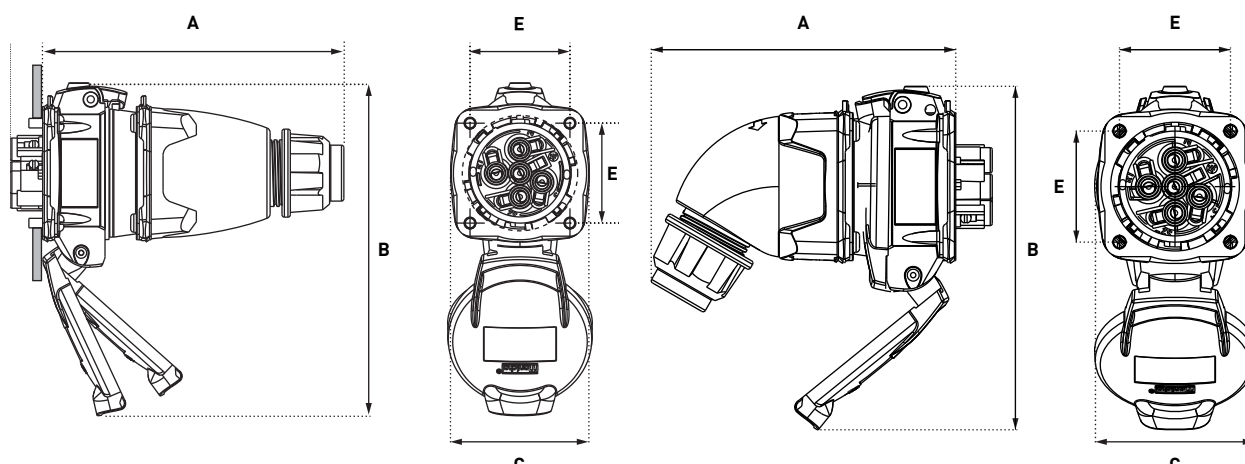
HANDLE	Cable outer Ø	Reference
POLY HANDLE WITH GLAND		
	9-18 mm	511P0D18

HANDLE	Cable outer Ø	Reference
POLY HANDLE WITH GLAND		
 60°	9-18 mm	511P6D18

DRAWINGS AND DIMENSIONS

	A	B	C	E
Straight handle	127	140	58	42
Angled handle	117	138	61	42

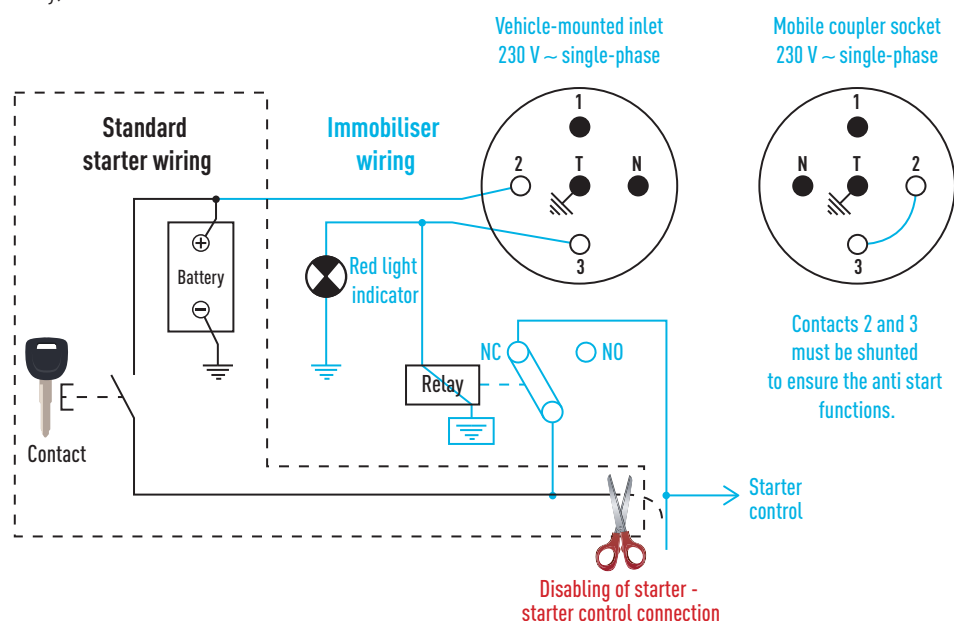
PLUG ON SOCKET-OUTLET



INFOS +

WIRING DIAGRAM FOR THE VEHICLE-MOUNTED SOCKET-OUTLET (230 V AC)

(for information only)



20 A → 90 A $\frac{400\text{ V}}{U_{\text{MAX}}}$

DISTRIBUTION BOXES

POWER SUPPLY FOR
AUXILIARY BATTERIES,
AIR-CONDITIONING UNITS,
TRAILERS, TANKERS...

SAFE ELECTRICAL CONNECTIONS

our boxes ensure the safety of operators and the protection of mobile electrical installations.



IP66
IP69 ⁽¹⁾



GRP



IK09



-40 °C
+60 °C

[1] IP44 with domestic socket-outlets

OTHER FEATURES CD BOXES

Fastenings	Captive stainless steel screws
Wiring capacity	2 x 1,5 mm ² to 5 x 35 mm ²
Cable entries	M50 max..
Housing dimensions (W x H x D) in mm	345 x 225 x 156
Assembly	10 modules max..

LIQUID GAS TRANSFER BOX TECHNICAL FEATURES

Protection	30 mA
Earthing connection of the lorry is ensured.	
Fixation	300 x 300 mm
Height	470 mm
Depth	250 mm
Cable glands	M40 IP68 (Ø 20 to 32 mm)



other
configurations,
circuit protection
or dimensions are
available on request.
Please contact us.

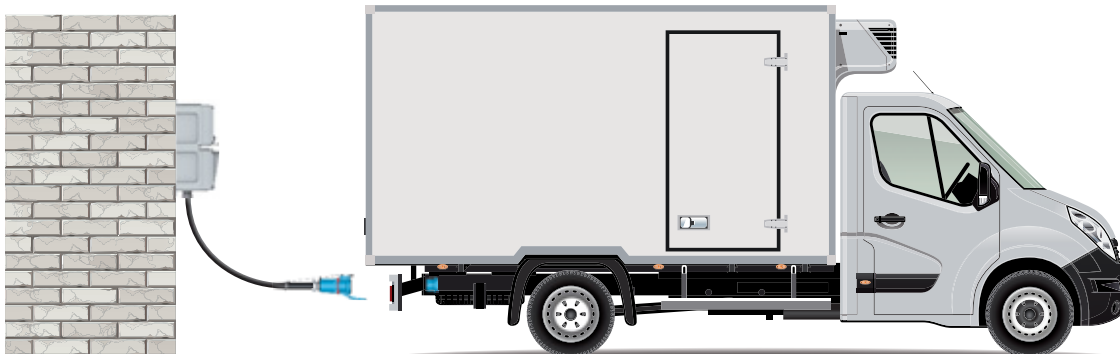
EXAMPLES OF APPLICATIONS : PRE-WIRED BOX WITH DIFFERENTIAL PROTECTION FOR REMOTE POWER SUPPLY.

Contact us for the references.

CD box and RETTBOX®S for the power supply of a rescue vehicle.



CD box and self-ejection plug for the power supply of a refrigerated vehicle.



Liquid gas transfer box for power supply of a tanker.



Specific documentation is available for these applications.