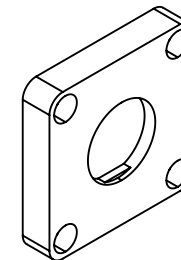
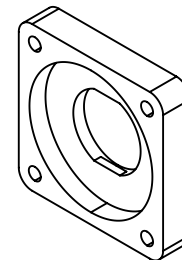
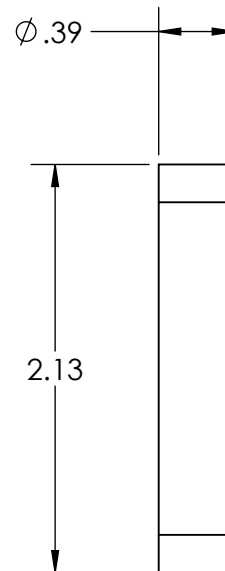
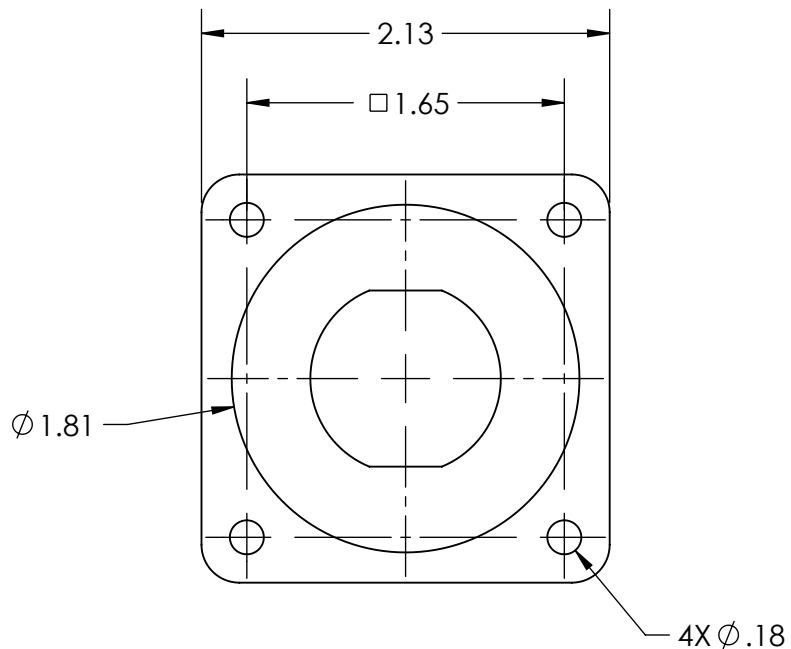

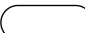


This drawing is the property of MELTRIC Corporation, Franklin (Milwaukee), Wisconsin, USA. Any unauthorized copying of this drawing by any means, ENG/RD/06 REV: 21 ISSUED DATE: 10/7/16 or disclosure of its contents to any person not authorized by MELTRIC Corporation or its agents to receive it, is strictly prohibited.



TOLERANCES UNLESS OTHERWISE SPECIFIED		<div>MELTRIC</div> <div>A COMPANY OF MARECHAL ELECTRIC</div>			
<div>MACHINED SURFACES $\sqrt[125]{\text{MAX}}$</div> <div>GROUND SURFACES $\sqrt[32]{\text{MAX}}$</div> <div>ANGLE TOLERANCE $\pm 1^\circ$</div> <div>REMOVE BURRS & SHARP EDGES TO .015 MAX.</div> <div> DIMENSIONS SHOWN IN OVALS ARE INSPECTION DIMENSIONS.</div>	<div>ENGLISH</div> <div>0.X ± 0.05</div> <div>0.XX ± 0.01</div> <div>0.XXX ± 0.005</div>	DRAWN	APPROVED	DRAWING TITLE:	
		DATE:		SCALE	MATERIAL:
		SHEET:		NTS	PLASTIC
		1 OF 1		PART NUMBER	
		251A457-E			